



# SUNCOAST CHESS CLUB NEWSLETTER

VOL 4 NO 1

JAN, 2001

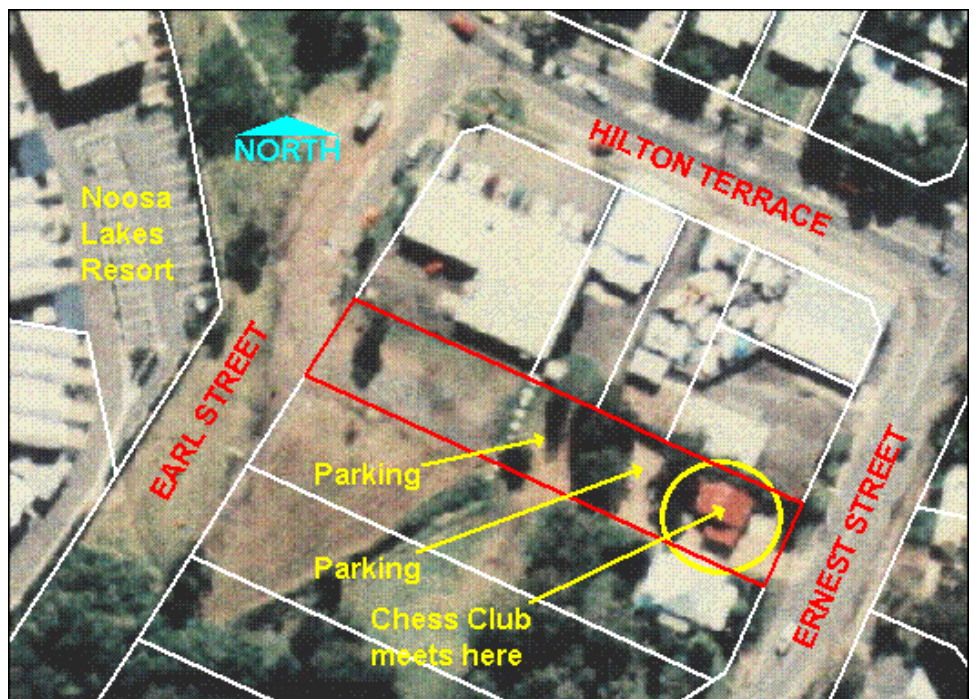
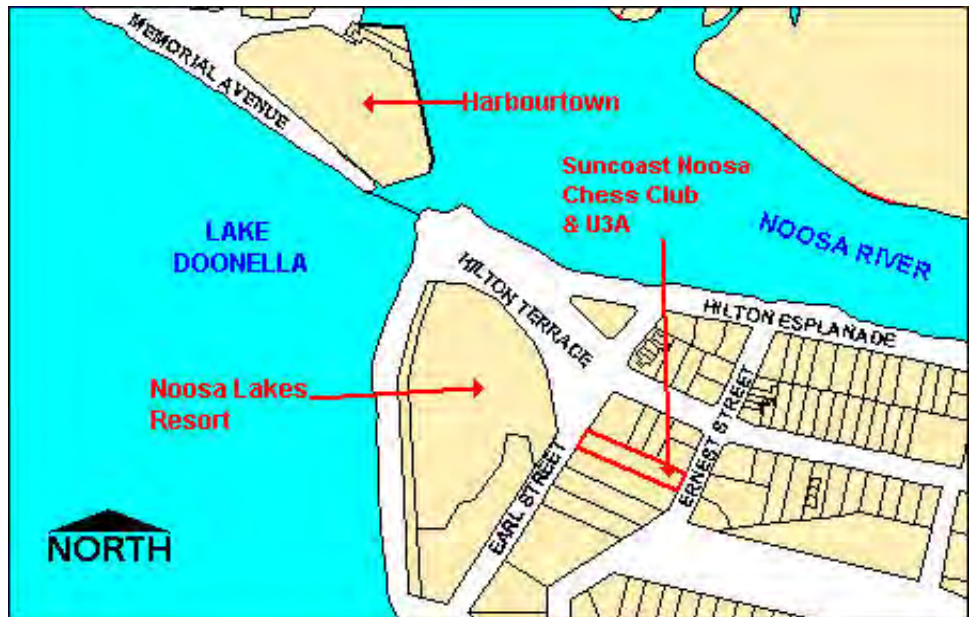
## INTRODUCTION

Welcome to the year 2001 at the Suncoast Chess Club. Apologies for the break in production again, but end of year business, holidays and hard disk failures take their toll. We would have been in more trouble had the editor not purchased a CD burner and backed up most of his chess stuff just days before the failure!!

## NOOSA CLUB MOVE

After deliberating for some time, the Noosa-end of the club has decided to relocate. Details follow:

- **U3A premises, Earl Street, Tewantin.** Diagrams below show the site's location and highlight where to go to park and which building to enter. The car park area is a little dark, so some members may wish to bring a torch.
- **Thursday nights** – for most tournaments be there by 7:15PM to be in the night's draw.
- Club members must join the U3A (\$25), but there will be a reduction in nightly fees.
- There is no fee for the use of the premises, greatly reducing costs to the club and assisting in securing the long-term viability of the Noosa-end.



## APOLOGIES

A couple of apologies. First to the Buderim end of the club, there is a growing list of results requiring publication (no they were backed up so were not lost), but the editor is still loading software and cannot read them at the time of publication. Second to **Peter Crabbe**, your game with Otto is still to appear. To do it justice it needs a number of diagrams and as you'll see, there was no space. Sorry, fix it all next time.

## CALENDAR

The 2001 calendar for the Noosa-end of the club is provided below. Note that we have coordinated a couple of social nights with the proposed combined challenges. For those not in the know, these will be where the club combines for two nights of tournament chess. Also note that as a special feature, the Noosa Club Champion **Otto Mehlreter**, will take on all comers in a simul on Thursday 19 April.

DATE	EVENT	TIME LIMIT (mins per player)	ROUNDS PER NIGHT	TOTAL ROUNDS
Thurs 18 Jan - 25 Jan	Noosa Startup (7:15PM for a 7:30PM draw)	15 minutes	3 or 4	6 or 7
Thurs 1 Feb - 8 Mar	Noosa Summer's End	60 mins, then 10 secs per move	1	6
Thurs 15 Mar	Noosa Handicap Lightning #1	Min 2 - max 15 mins	All	6 or 7
<b>Tues 20 Mar</b>	<b>SUNCOAST CLUB – COMBINED CHALLENGE – PART 1 – PLAYING AT BUDERIM</b>	15 mins per player	4	4
Thurs 22 Mar	Social Chess (due to the Tuesday night commitment)			
Thurs 29 Mar - 12 Apr	<b>Noosa Rapid Championships</b> (7:15PM for a 7:30PM draw)	20 mins, then 10 secs per move	2	6
Thurs 19 Apr	Noosa Club Champion Simul (7:30 start)	At Otto's leisure		
Thurs 26 Apr - 31 May	Noosa Falling Leaves (7:15PM for a 7:30PM draw)	90 mins, then 10 secs per move	1	6
Thurs 7 Jun	Noosa Handicap Lightning #2	Min 2 - max 15 mins	All	6 or 7
Thurs 14 Jun - 21 Jun	<b>Noosa Allegro Championships</b> (7:45PM for an 8:00PM draw)	10 mins, then 5 secs per move	3	6
Thurs 28 Jun - 2 Aug	Noosa Brass Monkey	60 mins, then 10 secs per move	1	6
<b>Sat 7 - Sun 8 Jul</b>	<b>SUNCOAST 2001 OPEN</b>			
Thurs 9 Aug - 16 Aug	<b>Noosa Lightning Championships</b> (2 games each round)	5 mins	3	6
<b>Thurs 23 Aug</b>	<b>SUNCOAST CLUB – COMBINED CHALLENGE – PART 2 – PLAYING AT NOOSA</b>	15 mins per player	4	4
Thurs 31 Aug - 4 Oct	<b>Noosa Club Championships</b> (7:15PM for an 7:30PM draw)	90 mins, then 10 secs per move	7	7
Thurs 11 Oct	Noosa Handicap Lightning #3	Min 2 - max 15 mins	All	6 or 7
Thurs 18 Oct - 1 Nov	Noosa Sprung Rapid (7:15PM for an 7:30PM draw)	20 mins, then 10 secs per move	2	6
Thurs 8 Nov – 15 Nov	Three for Confusion (inc 4 points the win, 2 the draw and 1 the loss)	20, 10 and 5 minutes	2 opponents X 3 games	4
<b>Wed 21 Nov</b>	<b>SUNCOAST CHESS CLUB AGM AT A VENUE TO BE ANNOUNCED</b>			
Thurs 22 Nov	Social Chess (due to the Wednesday night commitment)			
Thurs 29 Nov - 20 Dec	Noosa Doubleplay Rapid	20 mins, then 10 secs per move	1 opponent X 2 games	4