



SUNCOAST CHESS CLUB NEWSLETTER

VOL 5 NO 1

FEB, 2002

INTRODUCTION

Welcome to the 2002 year and this very irregular newsletter. Sorry folks it won't be much more regular this year either, the way things are going.

CALENDAR

The 2002 calendar for the Noosa end of the club is contained below. For those interested in the Buderim end, you can find the calendar at <http://www.sunchess.aunz.org>.

DATE	EVENT	TIME LIMIT (mins per player)	ROUNDS PER NIGHT	TOTAL ROUNDS
Thurs 17 Jan - 31 Jan	Noosa Hot (7:30PM for a 7:45PM draw)	20 minutes, then 10 secs per move	2	6
Thurs 1 Feb - 14 Mar	Noosa Summer's End	60 mins, then 10 secs per move	1	6
Thurs 21 Mar	Noosa Handicap Lightning #1	Min 2 - max 15 mins	All	6 or 7
Tues 26 Mar	COMBINED CLUB CHALLENGE – PART 1 – PLAYING AT BUDERIM	15 mins per player	4	4
Thurs 28 Mar	Social Chess (due to the Tuesday night commitment)			
Thurs 4 Apr – 18 Apr	Noosa Rapid Championships (7:30PM for a 7:45PM draw)	20 mins, then 10 secs per move	2	6
Thurs 25 Apr	Noosa Club Champion Simul (7:30 start)	At Otto's leisure		
Thurs 2 May – 6 Jun	Noosa Falling Leaves (7:30PM for a 7:45PM draw)	90 mins, then 10 secs per move	1	6
Thurs 13 Jun	Noosa Gambit Night #1 (fixed openings, 2 games each round, reverse colours)	15 mins per player	All	6 or 8
Thurs 14 Jun - 21 Jun	Noosa Allegro Championships (7:30PM for an 7:45PM draw, 2 games each round)	10 mins, then 5 secs per move	4	8
Thurs 27 Jun	Social Chess (due to the Suncoast Open-Noosa)			
Sat 29 - Sun 30 Jun	SUNCOAST 2001 OPEN			
Thurs 4 Jul	Noosa Lightning Championships (2 games each round)	5 mins	5	10
Thurs 11 Jul – 15 Aug	Noosa Club Championships (7:30PM for an 7:45PM draw)	90 mins, then 10 secs per move	1	6
Thurs 22 Aug	Noosa Gambit Night #2 (fixed openings, 2 games each round, reverse colours)	15 mins per player	All	6 or 8
Thurs 29 Aug	COMBINED CLUB CHALLENGE – PART 2 – PLAYING AT NOOSA	15 mins per player	4	4
Thurs 5 Sept – 19 Sept	Noosa Sprung Rapid (7:30PM for an 7:45PM draw)	20 mins, then 10 secs per move	2	6
Thurs 26 Sept – 31 Oct	FIDE Time Trial (7:30PM for an 7:45PM draw)	30 mins, plus 30 secs per move	2 opponents X 3 games	4
Thurs 7 Nov – 14 Nov	Noosa Year's End Part 1 (7:30PM for an 7:45PM draw)	60 mins, then 10 secs per move	6	6
Wed 20 Nov	Suncoast Chess AGM (venue TBA)	Lightning		
Thurs 21 Nov	Social Chess (due to the Wednesday night commitment)			
Thurs 28 Nov - 19 Dec	Noosa Year's End Part 2	As above	As above	As above

Check out the club's website at www.sunchess.aunz.org. Contact the editor by phone on 5442 4168, by post at 12 Carramar Street, Tewantin, Qld 4565 or by e-mail at summers-noosa@spiderweb.com.au.

GAMES SECTION

One of the features of last year's calendar was the introduction of the Club Champion simul. Otto Mehltreter, the 2000 (and current) Club Champion took on all-comers entering into the spirit of things and playing quickly on each board. This was not easy for Otto as on many boards he was given a tough fight. Apologies but the editor cannot remember the final score, but it was in Otto's favour from memory though there were some losses too!

Otto is again in line for the simul this year as current club champion, however if he wishes to rest his simul play or seeks some variation, the editor would be happy to have a go instead.

From last year's event, there was an exciting tussle between Otto and the editor:

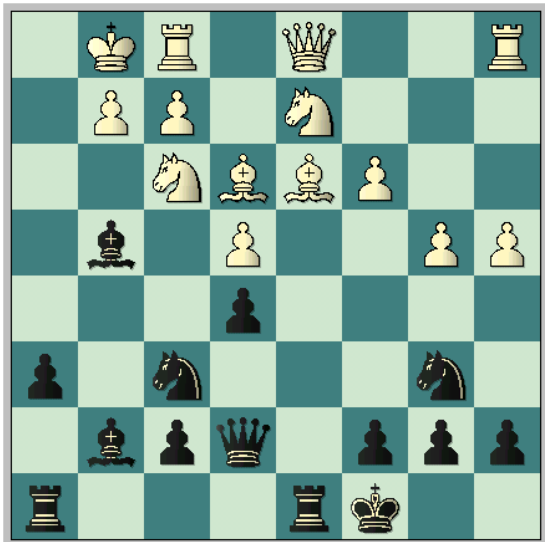
Mehlreter,O (1836) – Summers,P (1739) [B07]

Suncoast Champion Simul Tewanin,
19.04.2001

[Summers,Paul]

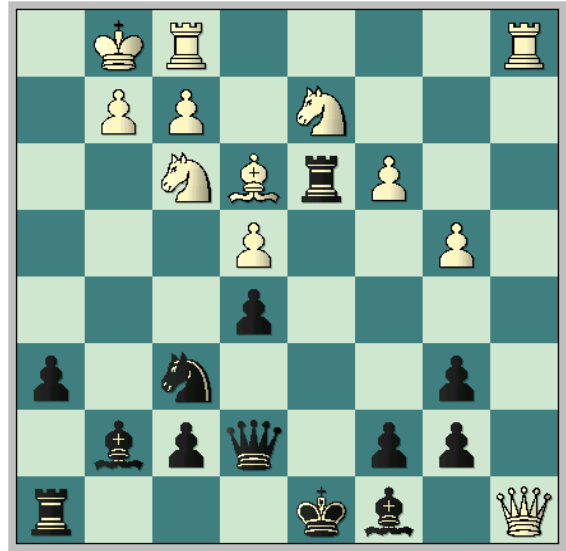
1.e4 d6 2.d4 Nd7 Dirty tactics, eh Otto. Black aims to have White needing to think from move 3 onwards, by playing this unusual (though not unheard of) move **3.c3 Ngf6 4.Bd3 e5 5.Nf3 h6 6.0-0 g5** **5N** Does this mean that White has castled into it? **7.h3 Bg7 8.dxe5 dxe5 9.Be3 Qe7 10.b4 Nb6 11.a4 g4 12.hxg4 Bxg4 13.Nbd2 0-0-0!**? Diagram

Or perhaps it means that Black has castled

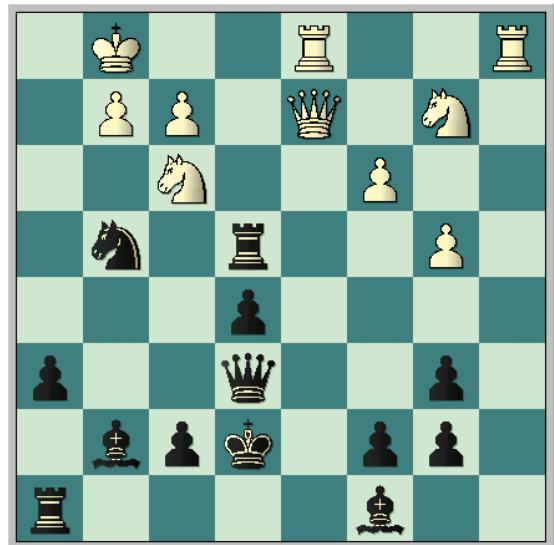


into it! Black's intention is to unbalance the position as much as possible, as it is a simul. Whilst the Black king could look exposed to an attack down the a-file, Black has a cunning resource to defend **14.a5? Rxd3 15.axb6 axb6 16.Qa4** [16.Ra8+ Kd7 17.Qa4+ Ke6

18.Qb3+ Kd7=] 16...Kd8 17.Qa8+ Bc8!
Diagram



The point, the bishop defends the weak pawn at b7 and Black holds the extra pawn, plus the king position **18.Qa4 Ng4 19.Qc2 Qd7 20.Nc4 Ke7 21.Nb2** [21.Ne1!?] **21...Rxe3! 22.Rfd1 Qe6 23.Qd2 Rxe4+-** Diagram



24.Qd3 f5 25.Nd2 Rf4 26.f3 e4 27.fxe4 fxe4 28.Qg3 Rhf8 29.Re1 Be5 30.Qh4+ Nf6 31.Qxh6 Qg4 32.Nd3 Rg8 33.Nxf4 Bxf4 34.Rxe4+ Kf7 [34...Nxe4 35.Qh7+ Kd8 36.Qxe4 Be3+-] **35.Qxf6+ Kxf6 36.Rxf4+ Qxf4 37.Rf1 Qxf1+ 0-1**